

TOMAHAWK

Bale Processor

Teagle



www.teagle.co.uk

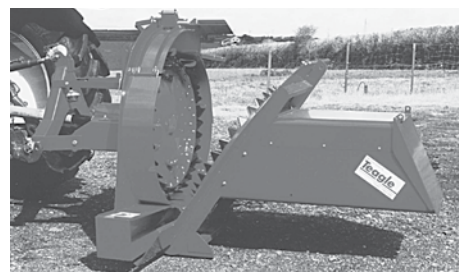
Contents

Benefits	page 1
Tomahawk 7100	page 2
Our latest development	page 3
Tomahawk 8100	page 4
Features & Options	page 5
Tomahawk 8500	page 6
Dual Chop	page 7
Case Study	page 8
Tomahawk 8555	page 9-10
Tomahawk 9500	page 11
Tomahawk 1010	page 12
Telehawk	page 13-14
Specifications	page 15-16



Established engineering excellence

Teagle machinery was established over 75 years ago, manufacturing the first Tomahawk bale shredder in 1983.



We remain a family business focussed on meeting the needs of our customers whether just around the corner, or in one of the 35 countries worldwide to which we regularly ship machinery.

From the outset, our machinery has been designed to be simple, robust and easy to use. We still stand by these values, with all our products being tested extensively on farms throughout the world to ensure that they perform reliably day-in day-out, under the toughest conditions.

The company now employs around 140 people, most of whom are based at our 15,000m² production facility in Cornwall, England.



Teagle we're right behind you

A model to suit your needs

Attention to detail - through our focus on feeding and bedding machinery over the last 30 years, we are able to offer a machine to fulfil your needs.

Experience - thousands of farmers benefit daily from our experience in designing and manufacturing machinery that delivers on performance and reliability.



7100



8100



8500



9500



1010



Why own a Feeder Bedder?

Saving you time and money!

1

For Bedding

Labour saving - one person can quickly and easily bed livestock.

Save straw - users regularly report up to 30% savings. Straw is spread evenly across the entire bedding area. Only deliver as much straw as is required in each pen.

Cleaner and healthier livestock straw is lightly shredded for improved moisture absorbance and livestock comfort. Because straw is not chopped, the bed retains its structure to provide hygienic lying areas.

In cubicles - straw chopped/spread to suit your requirements.

Better manure - straw is incorporated with the muck more evenly for improved field application.

Safer bedding - no need to enter the pen.

2

For Feeding

One machine, two jobs bed down and feed with all Tomahawk models*

Versatility - If you can bale a crop, we can shred it! Feed clamp or baled silage*, hay and root crops.*

Improve palatability - users report improved feed conversion of shredded bale silage.

Livestock cannot be selective wastage is reduced.

*except Dual Chop

3

For Processing

Pre-process straw for mixer wagons using our unique 'Dual Chop' system.

Improve efficiency - reduces mixer wagon processing time.

Effective feed conversion Precision cut straw stimulates digestion.

Prevent over-processing of silage in a Total Mixed Ration.

Process on demand - no need to stockpile.

4

Value for money - Impressive Payback

Existing Teagle Tomahawk owners are fully aware that the product can give an excellent return on investment in a very short time. All factors must be considered including commodity values, tractor operating costs, hourly labour rates and improved livestock welfare, all of which make the Tomahawk a hands down winner.



7100

Compact Performance

The 7100 offers the ultimate in manoeuvrability, without compromising its output.



FEEDS

Baled Silage/Hay

SPREADS

Straw up to 22m

CAPACITY

3m³

DUAL CHOP OPTION

see page 7



Trailed option

Standard Equipment:

- Electronic in-cab controls
- Swivel chute with 280° rotation
- Single crossbeater
- Adjustable feed slide on swivel chute model
- Slip and overrun clutch on PTO
- Bed speed indicator
- Quick hitch mounting system
- Remote tailgate switch

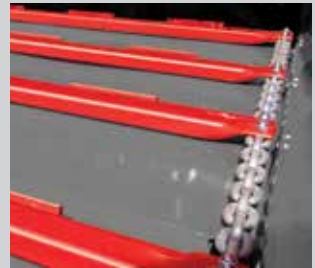
Options:

- Side discharge chute
- LED road lighting kit
- Tailgate extension - recommended for full size rectangular bales
- Wide Angle PTO (trailed models)
- Trailed kit or castor wheels
- High pressure hydraulic filter
- Cable controls

For option details see page 5 See specification pages 15-16 for bale capacities



- 1 Wireless control**
Slimline control panel uses Bluetooth® wireless technology for straight-forward communication between the operator and the machine.



- 3 Heavy duty bed chain**
Heavy duty bed chain with slats attached by 'U' bolts for easy maintenance. Grippers welded onto slats ensure positive bale feed.



- 5 Robust transmission**
Chain drive to crossbeater ensures reliable transmission of maximum power.



- 7 Improved delivery**
Large diameter fan with eight wide paddles deliver enormous air flow.



- 9 Remote control tailgate & bed switch**
Load bales without having to return to the tractor cab, ideal when removing netting or wrap.



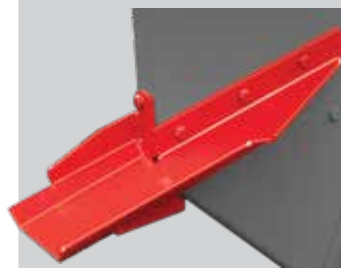
- 2 Easy loading**
Tailgate is flared for easy self-loading and is supported by two hydraulic rams to enable the heaviest of bales to be loaded.



- 4 Visual feedback**
Indicator provides the operator with visual indication of bed chain speed.



- 6 Consistent output**
The bale restraint design works with the grippers on the slats to give a good tumbling action, ensuring a consistently high discharge rate with all materials.



- 8 Easy maintenance**
If a foreign object causes damage to the paddles they can be removed, repaired or replaced without removing the fan or splitting the machine.



- 10 Pre-selector gearbox**
All Tomahawk models feature a high specification gearbox, with high/low fan speed gear preselection.

The Market Leader

The most popular feeder bedder on the market. Our progressive engineering delivers outstanding reliability and performance.



FEEDS

Clamp/Baled Silage

SPREADS

Straw up to 22m

CAPACITY

3.5m³

DUAL CHOP OPTION

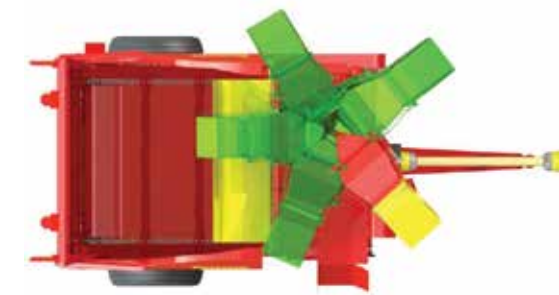
see page 7

Standard Equipment:

- Electronic in-cab controls
- Swivel chute with 280° rotation
- Single crossbeater
- Adjustable feed slide on swivel chute model
- Slip and overrun clutch on PTO
- Bed speed indicator
- 10.5/15 wheels
- Remote tailgate switch

Options:

- Side discharge chute
- LED road lighting kit
- Tailgate extension
- Wide angle PTO
- 11.5/15 Wheels
- High pressure hydraulic filter
- Cable controls
- Greedy boards



Swivel chute with 280° rotation

For option details see page 5 See specifications pages 15-16 for bale capacities



- 1 Automatic Chain Oiler**
Recommended for extended hours of processing. (Standard on 8555).



- 1 Road Lighting Kit**
Essential for highway use, the front and rear markers ensure that you operate safely when travelling on the road. (standard on 8500, 8555, 9500 and 1010).



- 2 Greedy Boards**
Increase capacity for loose materials (standard on 8500 and 8555 models).



- 2 Tailgate Extension**
Increase capacity and ease of loading, attaches easily to a standard tailgate (not required on the 1010).



- 3 Wheels & Mudguards**
Road work or mudded area these oversize tires and fenders are a great safety feature and also will protect your investment (standard on 8500, 8555, 9500 and 1010).



- 3 Hose Adaptor**
Flexibility with accuracy when using the Hose adaptor and extended spout to bed calf hutches / pig arcs (Hose not included)

Chute options



- 1 Side chute**
Deliver only to the right hand side, with slightly greater blow distance than the swivel chute. Discharge height is lower for easier access to buildings. Chute can be raised or lowered as required.



- 2 Swivel chute**
For flexibility of delivery, the chute rotates 280° allowing material to be directed to where it is needed. An adjustable feed slide is fitted for accurate placement of feed materials.



- 3 Swivel chute extension**
To deliver material behind the Tomahawk 9500 and 1010 the optional swivel chute extension is required.

The Professionals' Choice

A wider body for greater capacity and easier loading of 5ft wide bales. Industrial grade durability is provided by wear resistant material in the fan housing.



FEEDS

Clamp/Baled Silage

SPREADS

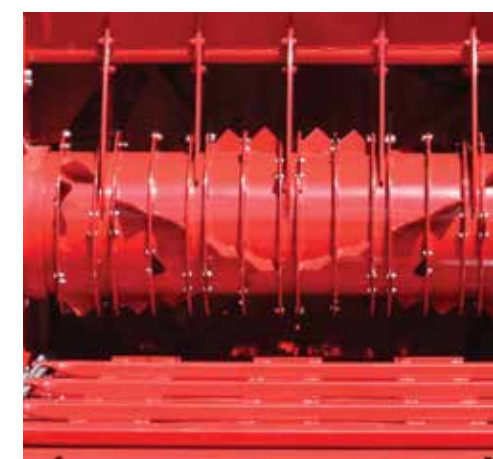
Straw up to 25m

CAPACITY

4.5m³

DUAL CHOP OPTION

see page 7



Single crossbeater

Standard Equipment:

- Electronic in-cab controls
- Swivel chute with 280° deg. rotation
- Single crossbeater
- Adjustable feed slide on swivel chute model
- Remote tailgate switch
- Slip and overrun clutch on PTO
- Bed speed indicator
- 12.5/15 wheels with mudguards
- LED road lighting kit

Options:

- Side discharge chute
- Tailgate extension
- Wide angle PTO
- High pressure hydraulic filter

For option details see page 5 See specifications page 15-16 for bale capacities

Chop short/spread long at the touch of a button

The 'Dual Chop' system incorporates a set of retractable blades that can be repositioned at the touch of a button, changing straw output from short chop (around 50mm) to no chop, and back again when desired in a matter of seconds.



'Dual Chop' mechanism in short chop position

- 1 Crossbeater**
Straw is teased from the bale by hooks positioned on the crossbeater.
- 2 Blades**
When the blades are lowered, straw is chopped using a scissor action.
- 3 Screen**
The straw then passes over a screen located behind the knife cassette. If the straw is too long it is recirculated through the blades by the crossbeater.
- 4 Blanking plate**
When the blades and blanking plate, shown in green, are raised straw passes above the screen and is discharged, without being chopped.
- 5 Fan chamber**
Straw that passes through or over the screen is drawn directly into the fan chamber for discharge.

7150 Ultimate Versatility

Ideally suited to reversing in cubicle sheds the 7150 Dual Chop offers the ultimate in maneuverability.



The unique 'Dual Chop' system is available in swivel chute versions:

7150 mounted (above left), 8150 trailed (above right)

8150 Rugged Performance

The 8150 Trailed Dual Chop is able to process straw for adding to TMR Mixer. Push button controls allow different material lengths to be processed cubicle bedding.



For these ladies size does matter!

Chopped straw is required for a variety of applications, which includes additional feed for a TMR and livestock bedding.

"We need to achieve butterfats of over 4%."

Gavin Rodda runs a 330-cow dairy herd at Rosemorran Farm, Cornwall, producing an average of 9500 litres. Milk produced under contract for Cathedral City branded cheese, which demands the constituents and quality of the milk are consistently high.

To assist in meeting these standards Gavin has sought the help of a nutritionist Andy Hawken from Three Counties Feeds. Andy says "The challenge when taking over this farm, as their nutritionist, was to improve the milk constituents and keep the yield high. One of the tools in the armoury to achieve this was the addition of pre-chopped, short straw to the ration."

"Short straw is more palatable and the cows now eat all of the ration"

"When out to grass, traditionally butterfats crash but by adding chopped straw to the ration we have seen butterfats at over 4% in the summer and in the winter up to 4.3%. Also, the proteins have stayed stable at 3.3% in the summer and 3.6% in the winter."



Andy Hawken explains, "When you use chopped straw as part of a balanced diet you need to add extra protein to help improve rumen function otherwise you could cause straw impaction which can lead to major health problems for the animal."

Gavin says "At first we used a contractor to chop our straw but this became a costly and time consuming process. We contacted Teagle and they recommended the New Tomahawk 8555 Dual Chop with a removable screen which we can use for both feeding and bedding.

The unique scissor action, cutting mechanism of the Teagle Dual Chop cuts the straw consistently short and is the ideal material for feeding, creating effective rumen stimulation. Gavin adds "The straw is chopped short with clean cut ends. By chopping as needed keeps the straw fresh which the cows find more palatable, increasing intake and reducing waste for the dung pile!"

"We've seen improvements in cow health, condition and even fertility."

Andy says, "We want to reduce the length of the straw significantly from the traditional "muzzle width" to at least half that size with sharp ends to produce multiple scratching effects on to the papillae (which are like little fingers). More scratching stimulates more papillae, creating more surface area and increasing the nutrients back into the cow. It's achieved by chopping the straw consistently in the correct way."

Gavin concludes "Apart from improving proteins and butterfats since incorporating the chopped straw into the diet we have also seen improvements in cow health, condition and fertility. We experienced no LDAs from last winter and continuing into this year."

Key benefits of feeding a ration consisting of pre-processed straw:

The diet is more open and palatable

Less or no sorting occurs, resulting in a complete diet being fed

No over-processing, reduced mixing time

The added straw helps to stabilise the pH levels in the stomach

Better energy balance is achieved after calving, meaning improved health during the transition period

Adding straw to the diet can aid rumination and avoid acidosis

Helps to maintain butterfats during spring/summer grazing

If you feed silage, adding straw helps to reduce the potassium levels, which can be beneficial during calving

The additional fibre helps to retain the food in the stomach for longer

*Insert: Andy Hawken, Nutritionist Three Counties Feeds
Below: Gavin Rodda
photo © OateyMedia*



Chop short/spread long...

...at the touch of a button



3 OPERATING MODES

- 1 **Short Chop**
knives and screen
- 2 **Shred**
knives and bypass frame
- 3 **Distribute**
no knives and bypass frame

The Ultimate Bale Processor

CHOP STRAW SHORT*



SPREAD LONG STRAW



CHOP HAY SHORT*



DISTRIBUTE CLAMP/BALED SILAGE



- POULTRY & CUBICLE BEDDING
- TMR PRE-PROCESSING

- LOOSE HOUSING
- LANDSCAPING/MULCHING

- TMR PRE-PROCESSING
- BARRIER FEEDING

- TMR PRE-PROCESSING
- BARRIER FEEDING

+ Save time and fuel

Time and fuel can be saved by processing straw prior to it being added to the ration in a diet feeder. 66,000 chops per minute offers fast and consistent performance.

+ No over processing

Pre-process straw so that the diet feeder does not need to mix for as long, thereby reducing the problem of over processing the silage in the ration.

+ Short chop length

Chopping down to an average of 2", with clean cut ends, means you can achieve the ideal material for feeding to create effective rumen stimulation and increased milk yields.

* Recommended <20% moisture content

8555 Dual Chop

Our latest development

The Tomahawk 8555 can process straw and clamp baled silage. The screen which is usually fitted to ensure a consistently short chop length, is now removable through the side of the machine.



(Optional bypass frame and storage rack shown)

FEEDS

Clamp/Baled Silage

SPREADS

Straw up to 22m

CAPACITY

4.5m³

Automatic chain lubrication system

The new 8555 incorporates an electronically controlled, automatic lubrication system for the crossbeater drive chain.

Convenient operation

The blanking frame, required to feed silage, can be conveniently stored under the machine in an optional stowage rack.

Standard Equipment:

- Electronic in-cab controls
- Swivel chute with 280° rotation
- Road lighting kit
- Adjustable feed slide on swivel chute model
- Remote tailgate switch
- High pressure hydraulic filter
- Slip and overrun clutch on PTO
- Bed speed indicator
- 12.5/15 wheels and fender kit

Options:

- Tailgate extension
- Wide angle PTO
- Extra screen
- Blanking Frame
- Screen Storage Rack

For option details see page 5 See specifications page 15-16 for bale capacities

Our latest wide body design

Ideally suited to farmers where a combination of manoeuvrability and high capacity is required. The 9500 offers easier loading and a high output with a wear resistant fan housing for durability.

FEEDS
Clamp/Chopped Silage
SPREADS
Straw up to 25m
CAPACITY
8m ³



Weigh system

Standard Equipment:

- Electronic in-cab controls
- Swivel chute with 280° rotation
- Twin crossbeaters
- Adjustable feed slide on swivel chute model
- Remote tailgate switch
- Slip and overrun clutch on PTO
- LED road lighting kit
- Bed speed indicator
- 305/55 R22 wheels & Mudguards

Options:

- Side discharge chute
- Wide angle PTO
- High pressure hydraulic filter
- Tailgate extension (600mm)
- Weigh system
- Greedy boards
- Braked axle
- Swivel chute extension

For option details see page 5 See specifications page 15-16 for bale capacities

Massive capacity and output

The biggest model in our range with the capacity to hold up to 4 rectangular bales. The 1010 incorporates wear resistant fan housing for durability and a braked axle for multiple site use.

FEEDS
Clamp/Chopped Silage
SPREADS
Straw up to 25m
CAPACITY
10m ³



Twin crossbeater

Standard Equipment:

- Electronic in-cab controls
- Swivel chute with 280° rotation
- Twin crossbeaters
- Adjustable feed slide on swivel chute model
- Remote tailgate switch
- Slip and overrun clutch on PTO
- LED road lighting kit
- Bed speed indicator
- 385/55 R22.5 wheels & Mudguards
- High pressure hydraulic filter

Options:

- Side discharge chute
- Wide angle PTO
- Weigh system
- Swivel chute extension to increase discharge height

For option details see page 5 See specifications page 15-16 for bale capacities

Delivers flexible spreading

No tractor required! The Telehawk encompasses all the benefits of its market leading Tomahawk models and is for use with a Telehandler.

SPREADS

Straw up to 13.5m

BALE CAPACITY

1 x round / 1 x rect.



Specifications

Length (without brackets)	3.7m
Width	1.69m
Height	2.52m
Weight (without brackets)	1270kg
Blow Distance	up to 13.5m
Bale Capacity	1 x round / 1 x rect.
Max. Bale Size (round)	1.5m dia.
Max. Bale Size (rect.)	1.2 x 1.2 x 2.4m

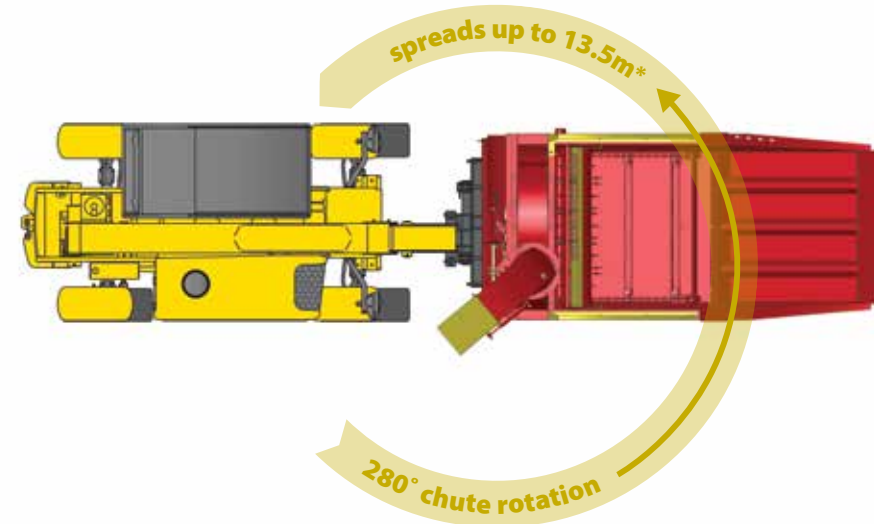
Minimum Handler requirements

Lift Capacity (min)	2.6 tonnes
Oil Flow (min)	60 l/min (13.3 gal/min)*
Oil Flow (max)	120 l/min (26.6 gal/min)*
Oil Pressure (min)	160 bar (2320 psi)
Oil Pressure (max)	270 bar 3915psi @ 80 ° (176 °F)**

* Oil flow at headstock. ** The hydraulic system requires a single acting valve with an unrestricted return.

Maximum return line pressure: 290psi.

...delivers flexible spreading



Scan to watch the Telehawk in action.



FORWARD THINKING

ACCESS ALL AREAS

Rotating 280° swivel chute can deliver straw to either side or in front of the machine.

ROUND OR RECTANGULAR BALES

Self loading operation, no tractor required.

SAVE STRAW

Bales are thoroughly teased apart.

EXCELLENT VISIBILITY

Front mounted for optimum visibility of the bedding operation.

LESS STRESS

Machine weight is close to the headstock.

IMPROVE ANIMAL COMFORT

Evenly spread straw up to 13.5m* in bedding areas.

* subject to telehandler oil flow.

Features



1 Gently tease bales apart

Hook rippers fitted to the low-speed crossbeater work with the bed chain to ensure an even feed to the fan.



3 Blockage free

The fan always has priority in the hydraulic circuit to ensure that the machine does not block.



2 Intelligent control

Adjustable pressure sensing hydraulic system monitors crossbeater loading, and automatically stops or reverses the bed chain to optimise processing speed.



4 Save time

Efficient hitching and unhitching. Quick-hitch attachments are available for most popular telehandlers.

Specifications



7100



8100/8500

	7100	7100 SC	7150 SC	8100	8100 SC
Specification					
Chute	Side	Swivel	Swivel	Side	Swivel
Dual Chop	No	No	Yes	No	No
Silage	Yes	Yes	No	Yes	Yes
Straw	Yes	Yes	Yes	Yes	Yes
Capacity					
Crossbeaters	1	1	1	1	1
Capacity (m³)	3.0	3.0	3.0	3.5	3.5
No. of 5' round bales	Straw x 2* / Silage x 1			2	2
No. of 8' rectangular bales (4'x 2'6" / 4'x4')	1/1	1/1	1/1	1/1	1/1
Bale chamber (tailgate down) W x H x D	1.4 x 1.25 x 2.5m			1.55 x 1.25 x 2.98m	
Blow distance (max.)	22m	20m	20m	22m	20m
Min. tractor PTO HP	60 HP (90HP mounted)			60 HP	60HP
Dimensions					
Overall width (chute closed)	2.2/2.27m**	1.86/2.10m**	1.86/2.10m**	2.27m	2.1m
Overall length (tailgate up)	2.65/3.65m**			4.14m	4.14m
Overall length (tailgate down)	3.80/4.80m**			5.38m	5.38m
Overall height (chute closed)	2.11/2.3m**	2.29/2.59m**	2.29/2.59m**	2.41m	2.58m
Unladen weight (mounted)	1640kg	1640kg	1780kg	1880kg	1880kg
Tyre size	trailed option 10.00/75-15.3			10.00/75-15.3 (options available)	
Oil flow rate (min/max) (l/min)	35 - 60	35 - 60	35 - 60	35 - 60	35 - 60

Key:

* With tailgate extension.

*** Not suitable for round bale silage unless chopped.

** Mounted (resting on ground) /trailed.

The company's policy is one of continuous improvement and development, therefore specifications are subject to change without prior notice.

Specifications

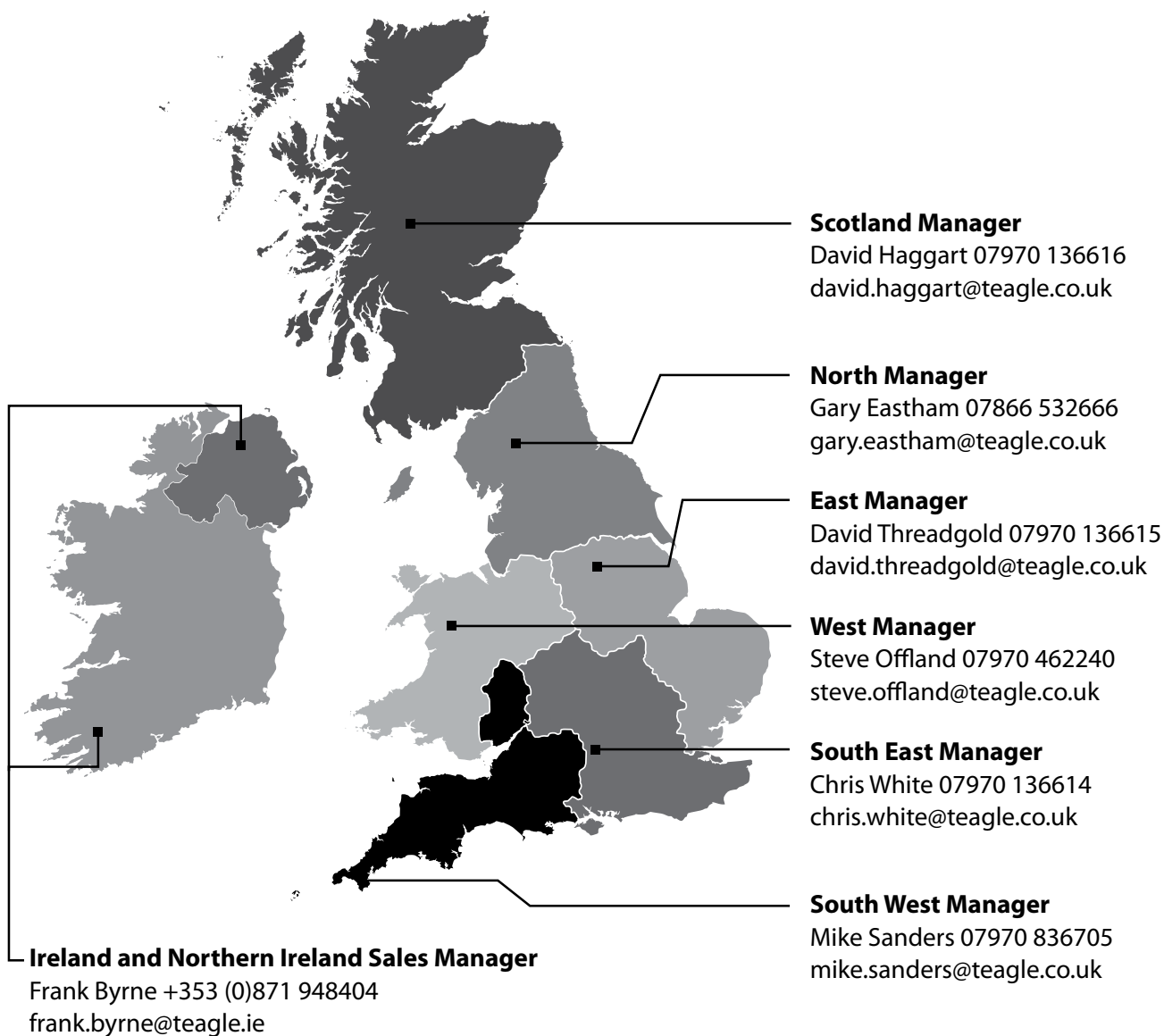


9500



1010

	8150 SC	8500	8500 SC	8555 SC	9500	9500 SC	1010	1010 SC
	Swivel	Side	Swivel	Swivel	Side	Swivel	Side	Swivel
	Yes	No	No	Yes	No	No	No	No
	No	Yes	Yes	No	Yes***	Yes***	Yes***	Yes***
	Yes	Yes	Yes	Yes	Yes	Yes	Yes	Yes
	1	1	1	1	2	2	2	2
	3.5	4.5	4.5	4.5	8.0	8.0	10.0	10.0
	2	2	2	2	3	3	3***	3***
	1/1	1/1	1/1	1/1	2/1	2/1	4/2	4/2
	1.70 x 1.25 x 2.98m				1.70 x 1.55 x 4.00m		1.70 x 1.58 x 5.70m	
	20m	25m	22m	22m	25m	22m	25m	22m
	60 HP	80 HP	80 HP	80 HP	80 HP	80 HP	80 HP	80 HP
	2.1m	2.44m	2.16m	2.16m	2.49m	2.21m	2.42m	2.42m
	4.14m	4.14m	4.14m	4.14m	5.2m	5.2m	6.17m	6.17m
	5.38m	5.38m	5.38m	5.38m	6.33m	6.33m	7.96m	7.96m
	2.58m	2.59m	2.77m	2.77m	2.9m	2.9m	2.93m	2.93m
	2255kg	2080kg	2080kg	2415kg	3007kg	3017kg	3580kg	3590kg
	10.00/75-15.3 (options available)				305/55 R22		385/55 R22.5	
	35 - 60	35 - 60	35 - 60	35 - 60	35 - 60	35 - 60	35 - 60	35 - 60



TOMAHAWK

Bale Processors

Teagle



www.teagle.co.uk

TOMAHAWK

Bale Processors



Teagle Machinery Ltd was established over 75 years ago, manufacturing the first Tomahawk bale shredder in 1983. We remain a family business focussed on meeting the needs of our customers whether just around the corner, or in one of the 35 countries worldwide to which we regularly ship machinery. From the outset, our machinery has been designed to be simple, robust and easy to use. We still stand by these values, with all our products being tested extensively on farms throughout the world to ensure that they perform reliably day-in day-out, even under the toughest conditions. As sales of Tomahawk Bale Processors continue to grow, the reasons that customers return time after time to buy Teagle are twofold:

Product Focus - We actively invest in research, design and manufacturing

technology to ensure that our product range constantly evolves to remain at the cutting edge, whilst being available at a competitive price. With the largest range of models from any manufacturer we ensure that our customers benefit from ease of use, the best performance, and day-in day-out reliability. Through our 35 years experience in the design, manufacture and support of Tomahawk Bale processors, Teagle are recognised internationally as a specialist in this field.

Backup – After-sales support is our priority, requiring commitment to a comprehensive parts stock and effective Dealer network. We set aside part of our 25,000m² facility in Cornwall to a substantial stock of wearing and non-wearing parts to keep you up and running.

Teagle

The Tomahawk range of Bale Processors.
First for quality, performance and reliability.



400 Series
404M/4040



400XL Series
404XLM/4040XL



500 Series
505M/5050



500XL Series
505XLM/5050XL

Why own a Teagle bale processor?

1 For Processing

Pre-process straw for feed.

Achieve consistency - provide a consistently short and palatable feed component.

Process on demand - no need to stockpile.

Improve efficiency - reduce operating time of mixer wagon.

Prevent over-processing - of silage in a Total Mixed Ration.

2 For Bedding

Cleaner and healthier livestock lightly shredded straw improves moisture absorbance for cleaner lying areas.

Save straw - users regularly report up to 30% savings by spreading the correct amount of straw evenly across the bedding area.

Labour saving - one person can quickly and easily bed livestock.

Safer - no need to enter the pen.

Better Manure - straw is evenly incorporated into the muck.

3 For Feeding

One machine, two jobs bed down and feed with the same machine.

Versatility - If you can bale a crop, we can shred it! Feed clamp or baled silage, hay and root crops.

Improve palatability - users report increased feed conversion of shredded bale silage.

Reduce wastage - selective feeding/sorting is reduced.

“There are tremendous benefits in bedding with short straw”.

Paul Whyand (pictured). Suffolk, UK.



Dairy



Beef



Pigs



Poultry



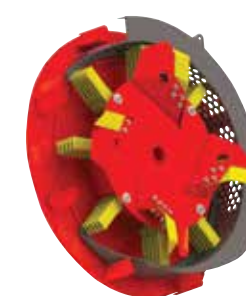
Mulching

Select the drum to suit your bale size



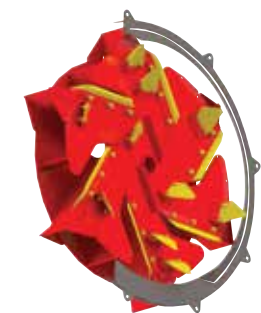
MODEL	400 Series	400XL Series	500 Series	500XL Series
DRUM				
Diameter	⌀ 1.55m	⌀ 1.55m	⌀ 1.80m	⌀ 1.80m
Length	1.55m	3.00m	1.55m	3.00m
Optional Length	1.85m	–	1.85m	–
BALES				
ROUND				
1.2m (4')	1 x bale capacity	2 x bale capacity	1 x bale capacity	2 x bale capacity
1.5m (5')	–	–	1 x bale capacity	2 x bale capacity
RECTANGULAR				
0.9 x 1.2 x 2.4m	–	1 x bale capacity	–	1 x bale capacity
1.2 x 1.2 x 2.4m	–	–	–	1 x bale capacity

Select rotor type



MILLING

TMR/Cubicles/Poultry/Pigs
Short Straw 10mm - 150mm



CHOPPING

Loose Housed Bedding/ Feeding
Long Straw/Silage/Hay

400 Series Model	404M	4040
400XL Series Model	404XLM	4040XL
500 Series Model	505M	5050
500XL Series Model	505XLM	5050XL

404M/505M

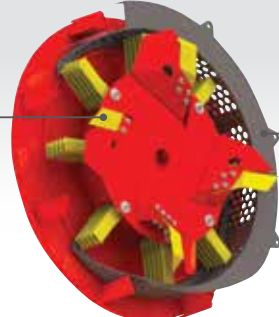


Screens can be changed, with hole diameters from 8mm - 120mm

SUITABLE FOR: Processing short material for TMR, Cubicles, Poultry Bedding or Biomass

Milling system

Interchangeable screens made in Hardox® wear plate enable calibration of Straw / Dry materials from 10mm to 150mm (recommended moisture content <20%). Process and discharge material to either side of the machine.

Spread Distance	Output	Output Length
up to 10m*	up to 2.5t/hr*	10-150mm**
<div> <div>Four central blades tear the bale apart</div> <div>  </div> <div>**For extended service life interchangeable screens use Hardox® wear plate</div> <div>Available with blades to cleanly chop, or hammers to grind.</div> </div>		

MODEL	A	B	C	Round Bales	Rectangular Bales	Min.	Kg	PTO*
404M	2.18m	2.36m	3.13m	1 x 1.2m (4')	–	80	904	1000
404XLM	2.53m	3.77m	3.13m	2 x 1.2m (4')	1x (0.9 x1.2 x 2.4m)	120	1122	1000
505M	2.44m	2.36m	3.13m	1 x 1.5m (5')	–	80	970	1000
505XLM	2.80m	3.77m	3.13m	2 x 1.5m (5')	1 x (1.2 x1.2 x 2.4m)	120	1320	1000

Swivel Giraffe Chute	<input type="radio"/>	Hydraulic Deflectors	<input type="radio"/>	Hydraulic Top Link	<input type="radio"/>
Giraffe Chute	<input type="radio"/>	Strawberry Chute Kit	<input type="radio"/>	Lower Chute Kit	<input checked="" type="radio"/>
Quick Hitch A-Frame	<input type="radio"/>	Fine tailgate mesh (400/500 series)	<input type="radio"/>	Wide Angle PTO	<input type="radio"/>

For options details see page 8. * Depending on chop length.

Key: ☐ = Optional ☒ = Standard N/A = Not Applicable

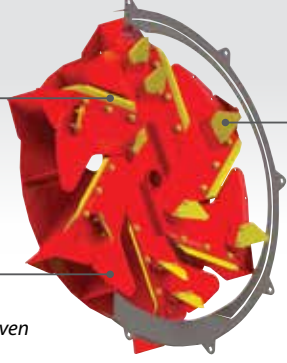
4040/5050



SUITABLE FOR: Spreading long straw for loose housing or dispensing Hay / Silage for feeding

Chopping system

Even the toughest bales can be processed with ease. The robust chopping rotor shreds material from round or rectangular bales and delivers a steady feed to either side of the machine.* Also suitable for root crops.

Spread Distance	Output	Output Length
up to 10m**	up to 3.0t/hr	150 -200mm
<div> <div>Long blades chop material</div> <div>  </div> <div>Triangular blades tear bale apart</div> <div>Rotor delivers a steady feed rate, even with wet material</div> </div>		

MODEL	A	B	C	Round Bales	Rectangular Bales	Min.	Kg	PTO*
4040	2.18m	2.36m	2.32m	1 x 1.2m (4')	–	80	811	540/1000
4040XL	2.53m	3.77m	2.32m	2 x 1.2m (4')	1x (0.9 x1.2 x 2.4m)	120	1029	540/1000
5050	2.44m	2.36m	2.42m	1 x 1.5m (5')	–	80	877	540/1000
5050XL	2.80m	3.77m	2.42m	2 x 1.5m (5')	1 x (1.2 x1.2 x 2.4m)	120	1227	540/1000

Swivel Giraffe Chute (straw only)	<input type="radio"/>	Hydraulic Deflectors	<input type="radio"/>	Hydraulic Top Link	<input type="radio"/>
Silage Giraffe Chute	<input type="radio"/>	Strawberry Chute Kit	<input type="radio"/>	Lower Chute Kit	<input type="radio"/>
Quick Hitch A-Frame	<input type="radio"/>	Fine tailgate mesh (400/500 series)	<input type="radio"/>	Wide Angle PTO	<input type="radio"/>

For options details see page 8. *Optional lower chute kit required for LH discharge.

** Distance reduced to 10m at 540rpm PTO speed

Key: ☐ = Optional ☒ = Standard N/A = Not Applicable



Model shown:
T500BXML

SUITABLE FOR: Delivering milled bedding / mulching materials up to 80 metres from the Mill

Remote distribution

Access all areas; minimise livestock disturbance and risk of biocontamination. Based on our mill system (see page 3) the turbo fan enables centralised processing and remote transfer of milled material via a flexible hose and/ or fixed manifold system.

Capacity (Max)	Tractor HP (Min)	Material output
Up to 2.5t/hr	120	8-50mm



The independent hydraulic system is PTO driven, featuring onboard pump, tank and fan cooled radiator.

MODEL	A	B	C	Round Bales	Rectangular Bales	Min.	Kg	PTO*
T500BM	2.45m	2.55m	3.13m	1 x 1.5m (5')	-	80	1390	1000
T500BXML	2.80m	3.95m	3.13m	2 x 1.5m (5')	1 x (1.2 x 1.2 x 2.4m)	120	1680	1000

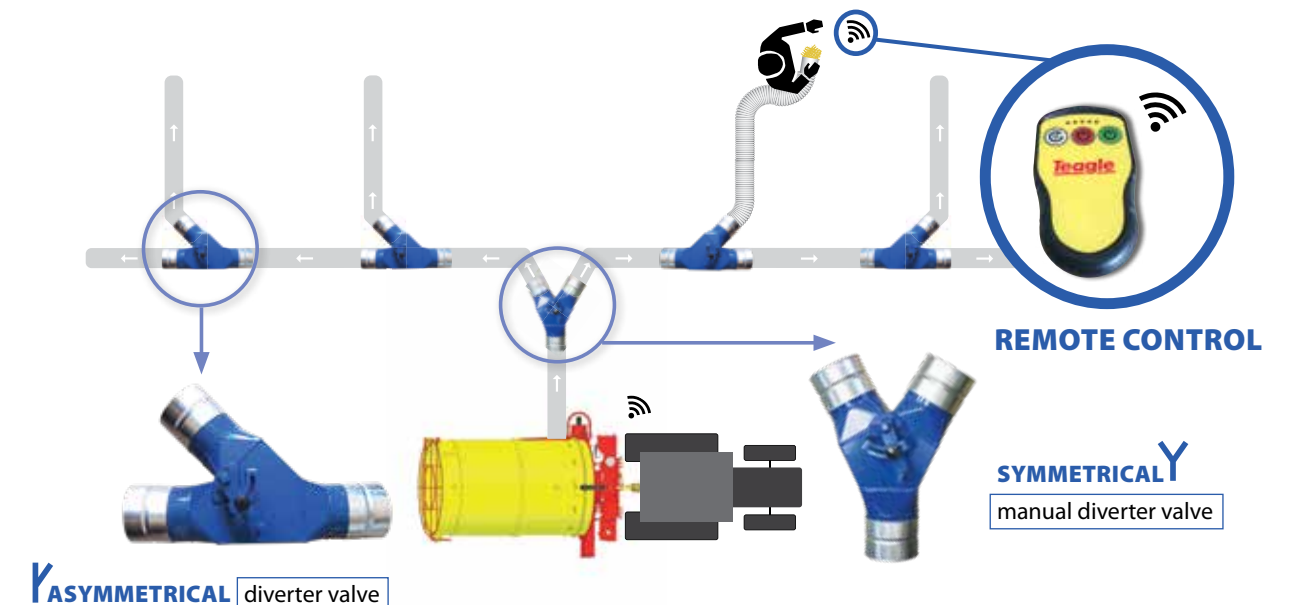
Rearward deflector	O	Liquid spray kit	O	20m hose kit (127mm)	O
Duct Divertor Valves	O	Trailed Chassis	O	Radio Remote control	●
WAJ PTO	●	Fine Mesh tailgate	●	Dust sealing kit	●

For options details see page 8. * Depending on chop length. ** (chute closed/open)

Key: O = Optional ● = Standard N/A = Not Applicable

Remote control and optional manifold components

As standard the T500BM is supplied with a radio remote control to enable the operator to start/stop material flow up to 80m from the machine. Options include 20m lengths of flexible hose (127mm) and high specification mechanical diverter valves to enable assembly of bespoke fixed manifold systems.



Liquid Spray Kit

DUST SUPPRESSION FOR DRUM TOMAHAWKS

The liquid spray kit can be fitted to any model in the 400 - 500 Tomahawk range to reduce dust from milled straw, or to enable the application of anti-bacterial products to bedding.



TANK

- Suitable for Water / Antibacterial liquids
- 60 Litre Capacity
- Robust polypropylene
- 12 volt pump system up to 60 psi
- Tank includes drain point



SPRAY SYSTEM

- Flow activated when T500BM starts
- Manual Valves control flow to LH/RH sides
- Pressure / Flow adjustment
- Maximum 3 nozzles per system
- Anti-drip nozzles



HIGH PRESSURE LIQUID SPRAY SYSTEM

- Apply disinfectant to bedding or water for dust reduction



ROUND AND RECTANGULAR BALES

1.2m or 1.5m round bales, with drum extensions available for 2.4m rectangular bales.



DISCHARGE TO ONE OR BOTH SIDES

Chutes can be open or shut independently. Various chutes are available for special applications, see options on page 8.



STRAIGHT-FORWARD LOADING

Horizontal drum can easily be loaded. A hydraulic top link enables easy adjustment of drum angle.



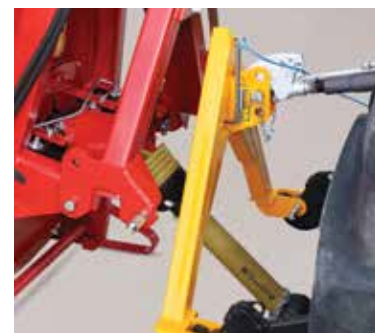
MANOEUVRABLE

Machine weight is close to tractor, ensuring manoeuvrability even with smaller tractors.



EASE OF OPERATION

Simply start the cutting rotor, and then adjust the drum speed of rotation to control the discharge rate.



ACCESSORIES FOR EASE OF USE

For easy hitching-up and adjustment of the drum angle select the optional A-Frame attachment and hydraulic top link.

Suitable for feeding and bedding

MILL, CHOP OR SHRED. Rotors available for straw, hay, silage and root crops.

See pages 3 to 5 for suitable models.

CHOP STRAW SHORT



- Poultry & cubicle bedding
- TMR Pre-processing

SPREAD LONG STRAW



- Loose housing
- Landscaping/Mulching

DISTRIBUTE HAY



- TMR Pre-processing
- Barrier Feeding

DISTRIBUTE BALED SILAGE



- TMR Pre-processing
- Barrier Feeding



STRAW GIRAFFE CHUTE

Increase delivery height and blow distance. Dry materials only.



SWIVEL GIRAFFE CHUTE

Increase delivery height, available with hydraulic rotation and deflector. Dry materials only.



SILAGE GIRAFFE CHUTE

Increase delivery height and blow distance.



HYDRAULIC DEFLECTOR CONTROL

Available for all chutes except lower chute kit.



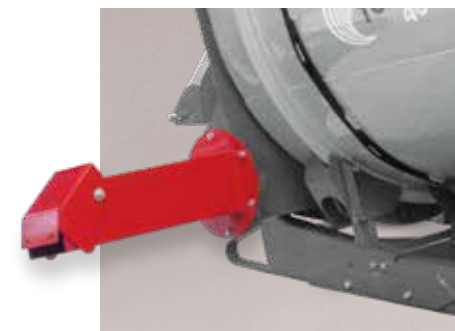
STRAWBERRY CHUTE KIT

Quickly and conveniently lay straw mulch between rows on both sides of the tractor, the chute kit can be fitted to the discharge chutes on both sides of the machine.



HYDRAULIC TOP LINK

For straightforward, in-cab adjustment of drum angle and feed rate. Not suitable for XL models.



LOWER CHUTE KIT

Required for delivery to left hand side of machine. Dry materials only. Includes open/closed control.

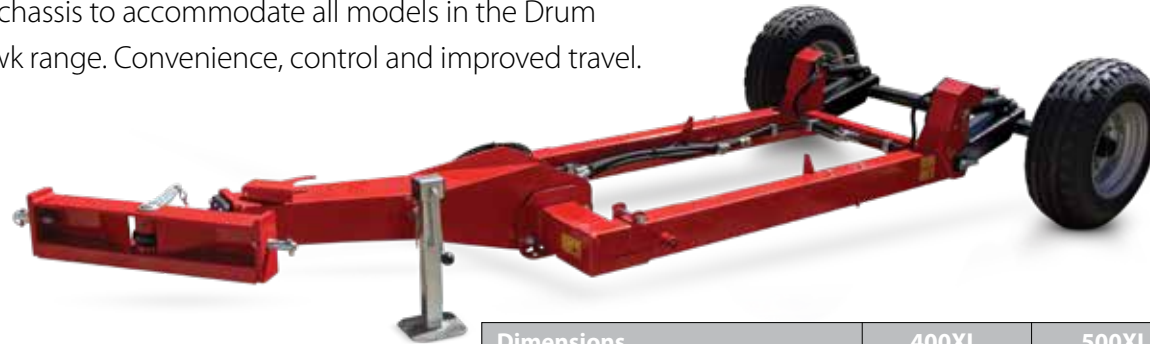


TAILGATE MESH

Available for all models to improve containment. Standard on T500BM.

STRIKE THE BALANCE WITH A SMALLER TRACTOR . . .

A trailed chassis to accommodate all models in the Drum Tomahawk range. Convenience, control and improved travel.



TRACTOR REQUIREMENTS

Hydraulic services: 2 double acting services required (pivoting axle and drum rotation). Minimum Tractor size (PTO): 80HP for chopping/100HP for milling.

Dimensions	400XL	500XL
Overall Height Lowered	2.89m	3.16m
Overall Height Raised	3.32m	3.57m
Overall Machine Width*	2.03m	2.03m
Overall Length (with Tomahawk)	4.86m	4.86m
Clearance Under Chassis**	0.20m	0.20m

* Chassis kit width – for Tomahawk widths refer to page 12

** Drawbar height 0.47m

Case Study



THE HEINIGERS purchased a Teagle 505M for adding fiber to the ration. They use 2.5kg of dry hay per ration for the lactating cows and 6.5kg for the cows in calving preparation. They shred 30 large square bales a month, dry storing and used daily for adding to the self-propelled mixer along with silage.

"The cut must be absolutely uniform to avoid

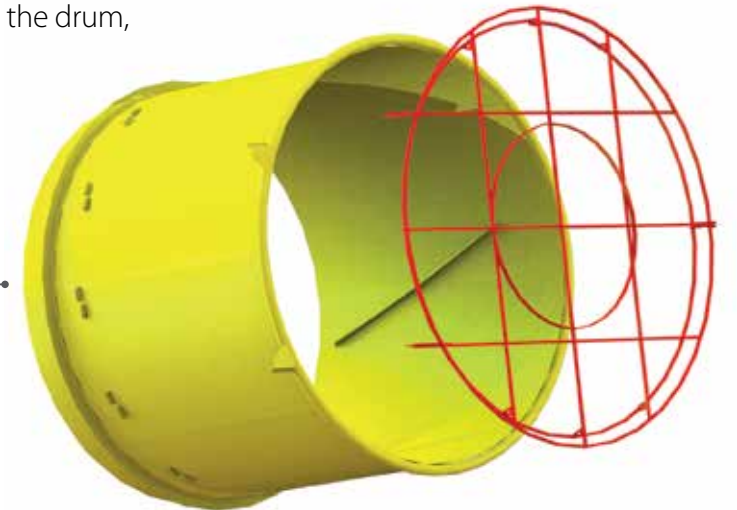
the cows sorting through the ration and the clean cut ends help to scratch the rumen of the cow and improve the assimilation of nutrients in the diet. Adding fiber to the diet improves the balance between protein and energy. "It's like a triangle, you need to get the best balance between protein, energy and fiber to have the best results." Getting more fiber into the diet also has other benefits, as well as increasing

the butterfat by .2% after only 2 weeks it has added health benefits of improving the BHB levels and fertility and there has been a marked decrease in problems with acetonemia (glucose deficiency). Labour time is reduced by the simplicity of operation and maintenance, making it faster and safer than a forage harvester along with the added benefit of it being more affordable.

Whether feeding or bedding simply load the bale into the drum, start the cutting rotor and set the drum to rotate.

DRUM

A hydraulic motor rotates the drum via drive belts. Discharge rate is controlled by varying the drum angle and speed of rotation.



CHUTE

The rotor discharges material to one or both sides, depending on chute options. Chutes can be turned off independently.



ROTOR

Direct drive from the PTO spins the cutting rotor. As the bale rotates with the drum, material is skimmed from the end of the bale.



Built to meet your needs

From round to rectangular bales, to bed straw or feed silage - configure your Tomahawk as follows:

1

SELECT DRUM SIZE

Choose from: 400, 400XL, 500, 500XL

2

SELECT ROTOR TYPE

Choose from: Milling or Chopping

3

SELECT CHUTE TYPE

and accessories (see page 10)



Scan to watch the Tomahawk in action.



The benefits of adding processed straw to a TMR



"Our results show how beneficial consistently pre-processed straw is in obtaining good dry cow intakes, even over straw that is mixed well in a wagon."

James Johns (pictured) farms a herd of 260 high performance Holsteins at Sixty Acre Farm, UK.

- In dry cow rations straw can be used to control energy intake and reduce the risk of milk fever.
- In milking cow rations straw can be very useful as physically effective fibre when required.

"For either group the key to feeding straw is incorporation to create a homogenous mix. Poorly processed straw will not blend which can encourage cows to sort the ration, making the problem worse rather than better."

Jeremy Hamilton, Three Counties Feeds

Trial undertaken by Three Counties Feeds at Sixty Acre Farm

A farm trial was conducted to investigate whether processing straw before it is added to a total mixed ration (TMR) increases the dry matter intake of dry cows fed a ration with high straw inclusions.

The far off dry cow ration contained 6kg of straw and the transition ration 4kg, the effectiveness of these rations depends totally on good feed intakes.

Control rations were prepared using the mixer wagon to chop and incorporate the straw, as best as this equipment would

allow prior to the trial. At this point feeding was already at a high standard.

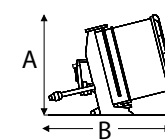
Without changing anything else the straw was pre-processed to 25mm in length. When the cow's intake increased, the portions were increased, with the diet proportions staying constant.

Before straw was pre-processed the far off dry cows ate 21.6kg, after processing they were eating 25.9kg - equating to 20% more. The transition group ate 9% more - a significant improvement in this critical stage.

"With improved and more consistent straw intakes we are better equipped to control metabolic stress in fresh cows, which can cause issues such as retained placenta and metritis. Getting off to a better start these cows have less negative energy balance and sub-clinical ketosis. Straw rations can also help prevent milk fever."



Pictured (left to right) Jeremy Hamilton & Andy Hawken AMTRA, DipRN. Three Counties Feeds



SPECIFICATIONS	400 SERIES	400XL SERIES	500 SERIES	500XL SERIES
Maximum Round Bale Diameter	1.20m	1.20m	1.50m	1.50m
Maximum Rectangular Bale Size	N/A	1.20m x 0.90m	N/A	1.20m x 1.20m
Overall height (A)*	2.18m	2.53m	2.44m	2.80m
Overall Length (B)	2.36m	3.77m	2.36m	3.77m
Drum Diameter	1.57m	1.57m	1.83m	1.83m
Drum Length (standard)	1.55m	3.00m	1.55m	3.00m
Long Drum (optional)	1.85m	N/A	1.85m	N/A
Lower Chute discharge height*	0.40m	0.40m	0.40m	0.40m
Upper Chute discharge height*	1.14m	1.14m	1.14m	1.14m
PTO power required**	80HP	120HP	80HP	120HP

Mill (see page 3)	404M	404XLM	505M	505XLM
Transport width (C)***	1.91m	1.91m	2.01m	2.01m
Operating width (C)	3.13m	3.13m	3.13m	3.13m
Straw Giraffe discharge height*	1.84m	1.84m	1.84m	1.84m
Weight	904kg	1,168kg	970kg	1,259kg

Chop (see page 4)	4040	4040XL	5050	5050XL
Transport width (C)***	1.96m	1.96m	2.06m	2.06m
Operating width (C)****	2.32m	2.32m	2.42m	2.42m
Silage Giraffe discharge height*	1.53m	1.53m	1.53m	1.53m
Weight	811kg	1,075kg	877kg	1,166kg

Turbo Mill (see page 5)	T500BM	T500BXL
Overall Length (B)	2.56m	3.97m
Transport width (C) fan no RHC	2.51m	2.51m
Operating width (C) fan with RHC open	3.11m	3.11m
Weight	1390kg	1680kg

Key:

* Working heights will increase by up to 1m depending on tractor **Typical tractor size to provide adequate lifting capacity and stability

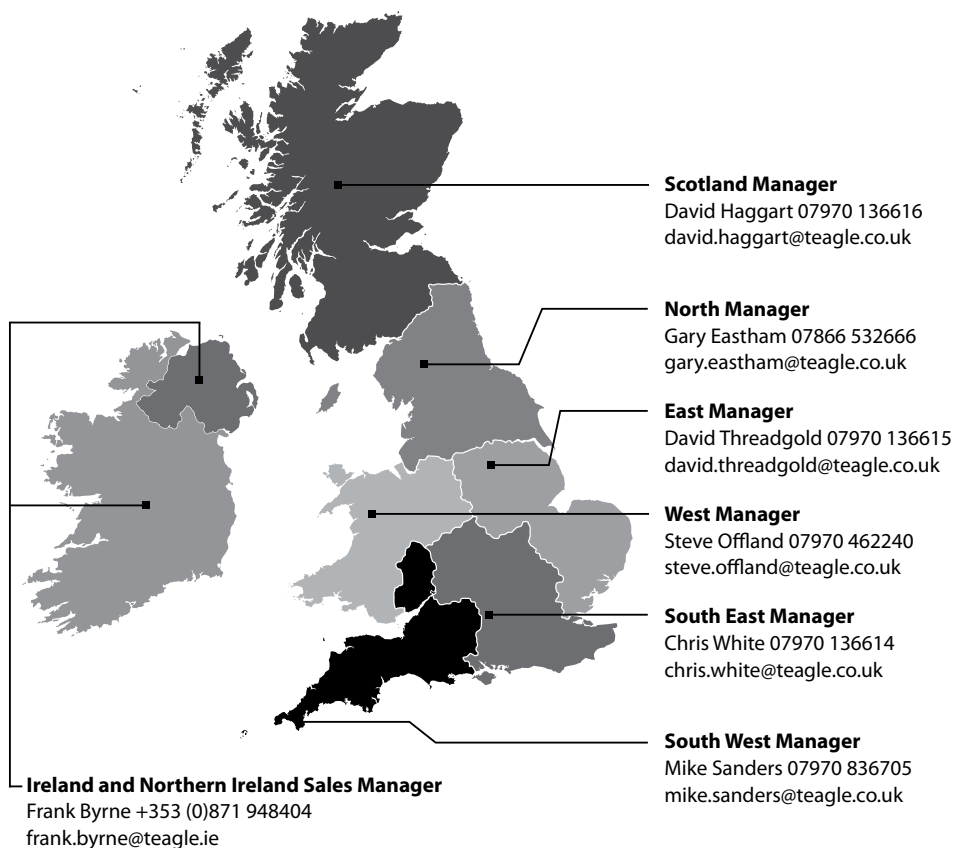
*** Chute extensions not fitted **** No optional left hand chute fitted

The company's policy is one of continuous improvement and development, therefore specifications are subject to change without prior notice.

Teagle

With over 30 years experience designing, manufacturing and supporting The Tomahawk range of Bale Processors, Teagle has established a reputation for performance and reliability, offering feeding and bedding solutions for all applications.

call our Sales Desk:
01872 560592



7100



8100



8500



9500



C12 Calibrator



Teagle

Teagle Machinery Ltd

Blackwater, Truro, Cornwall TR4 8HQ

sales@teagle.co.uk

www.teagle.co.uk

+44 (0)1872 560592

Tomahawk C12

Bale Processor

Teagle



CALIBRATOR

Calibrator

A High Capacity Mill for processing dry materials such as straw and miscanthus to a consistently short length for Bedding, Feeding and Biofuel Applications. Calibrate material length from 20mm - 100mm.



3 easy steps, just 1 operator

Straightforward setting of material calibration ensures you get up and running in minutes. Manage bale processing remotely from the loader vehicle via wireless Bluetooth® control, with no tractor operator required.



SET

- Select suitable screens for your application and unfold conveyor to the desired discharge height.
- Remove bale strings, run the C12 up to operating speed (1000rpm PTO), and load the bale chamber.



PROCESS

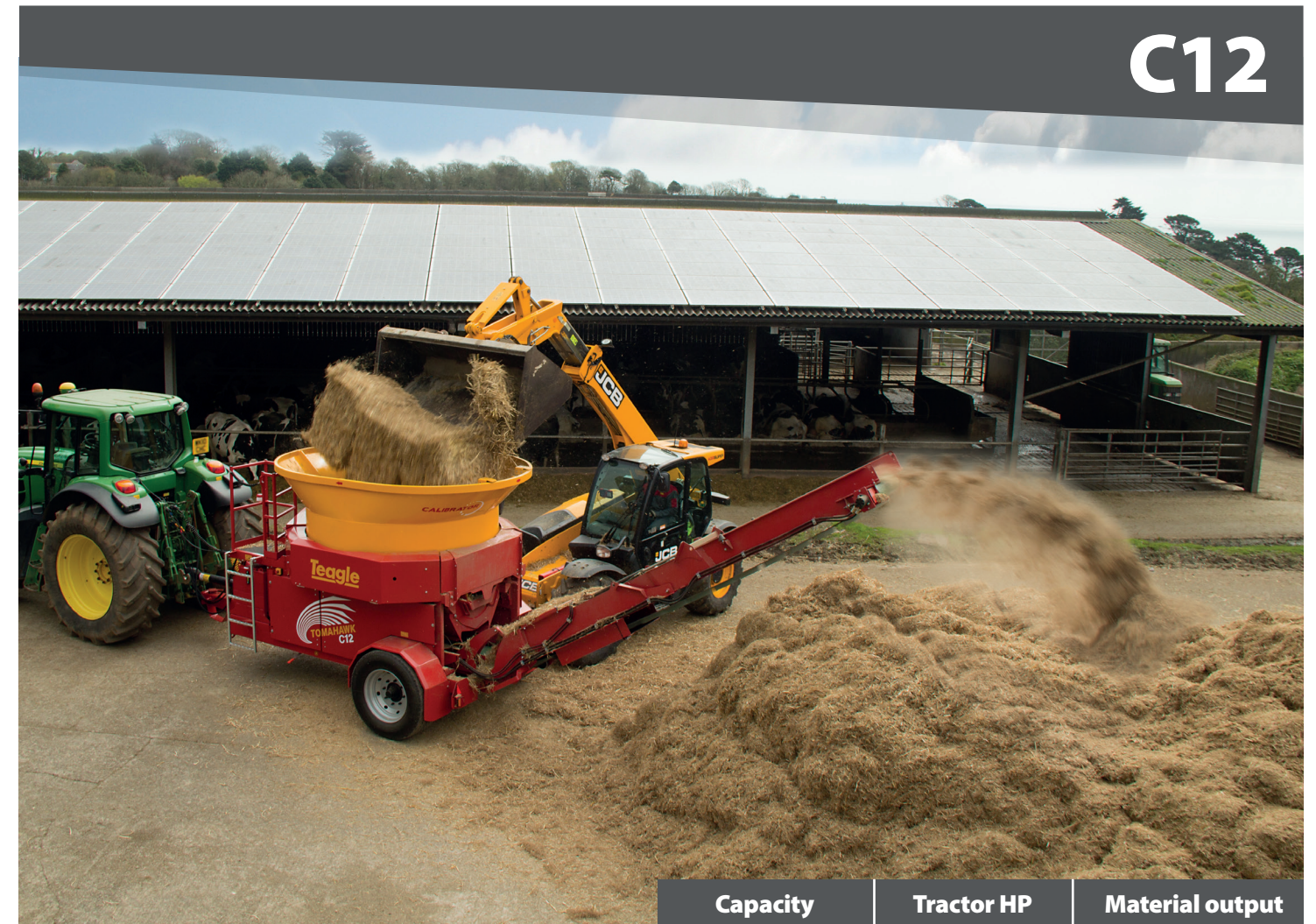
- Material is processed against a pair of interchangeable and reversible quarter circle screens below the rotor.
- When material has been processed to the desired length it falls onto the discharge conveyor.



OPTIMISE

- Tractor power loading is controlled remotely from the loader vehicle via Bluetooth®.
- To maximise throughput and prevent overloading, the C12 governs bale chamber rotation automatically.

C12



SUITABLE FOR: Materials up to 20% moisture content including forage, bedding and energy crops.

Capacity	Tractor HP	Material output
Up to 11t/hr	120 - 200	20 - 100mm

The Consistent Performer

Designed for Contractors and Large Scale Operators. Process up to 25 quadrant bales per hour (subject to straw quality) to a consistently short length.



“Straw is a very useful feed if prepared in the right way.”

- In dry cow rations it can be used to control energy intake and reduce the risk of milk fever.
- In milking cow rations it can be very useful as physically effective fibre when required.

“With improved and more consistent straw intakes we are better equipped to control metabolic stress in fresh cows, which can cause issues such as retained placenta and metritis. Getting off to a better start these cows have less negative energy balance and sub-clinical ketosis. Straw rations can also help prevent milk fever.”

Andy Hawken AMTRA, DipRN Three Counties Feeds



1 Automatic Power Loading

Rotor speed is monitored and bale chamber rotation automatically governed to optimise output for available tractor power. Operator can override bale chamber rotation from the loader vehicle.

2 Operator Information

A beacon on the viewing platform indicates low rotor speed, warning against either entering or loading more material into the bale chamber. A ground level stop button is fitted to instantly stop the conveyor and bale chamber rotation.

3 Safe Road Transport

The C12 is homologated to 40km/hr, incorporating Air/Hydraulic braking combinations, approved 285/55 R22 wheels, 300mm x 90mm Brake Drums and various hitch options. Road lighting includes LED lamps and strobe, as well as statutory side markers.

4 Independent Hydraulics

Protect the tractor hydraulic oil from overheating and contamination with the independent 150 litre oil system, fitted with auto-reverse cooling fan.

5 High Capacity Driveline

The driveline has shearbolt protection, overrun protection, and finally a massive 8 belt drive system with 200HP capacity.

6 Spare Screen Storage

Up to four optional spare screens, as illustrated, can be stored in a rack positioned within the C12 body for safe transport and instant access on farm.

7 Ease of Maintenance for Reliability

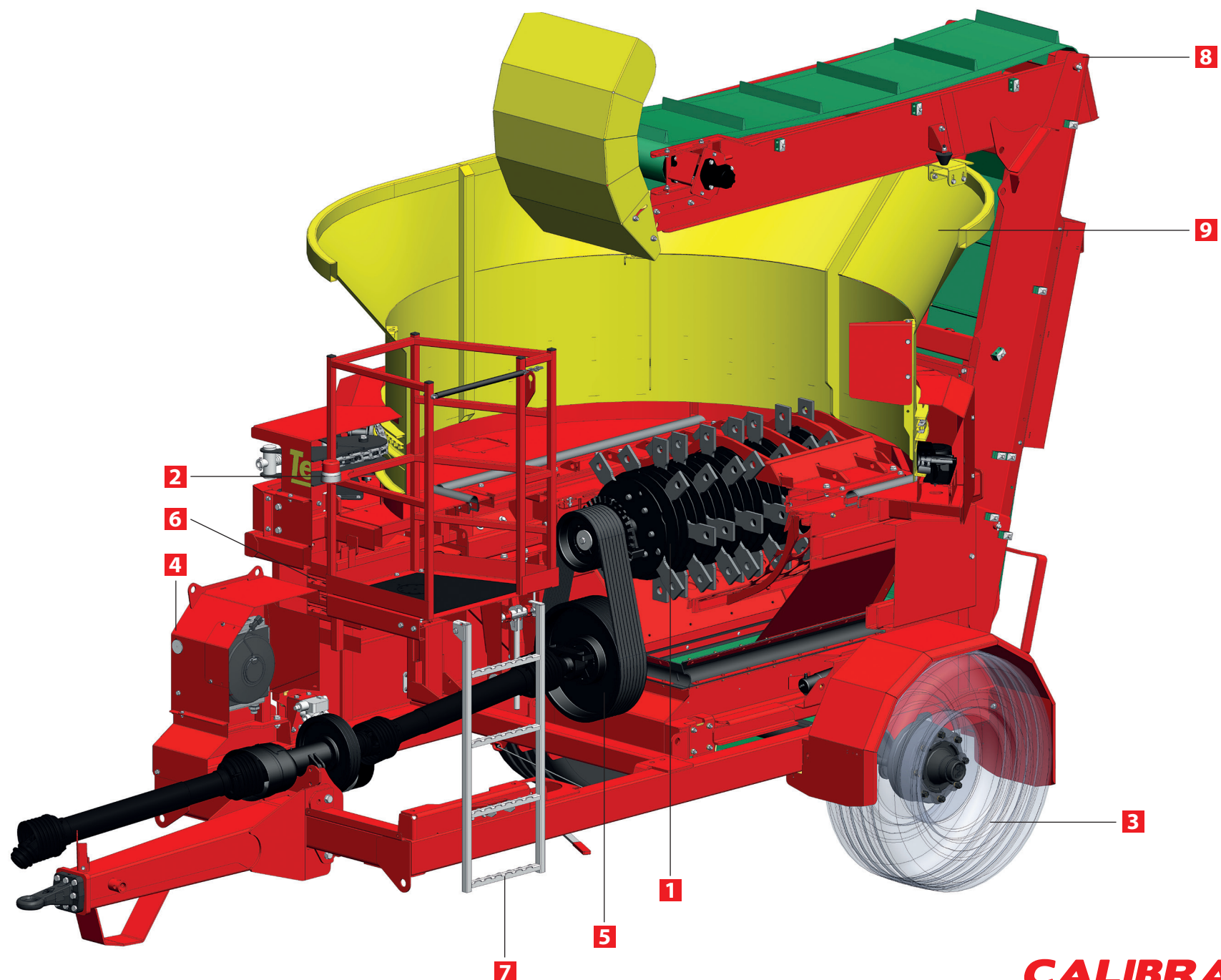
A ladder and platform to provide a safe viewing position into the bale chamber. Hinged maintenance covers and a centralised greasing banks for the driveline ensure straightforward routine maintenance.

8 Folding Conveyor

The hydraulic drive conveyor minimises dust and can deliver milled material up to 4.2m high into a trailer or onto a bunker pile. Conveyor can be folded from the comfort of the tractor seat. Optional deflector for loading trailers illustrated.

9 Lozenge Bale Chamber

Is designed to fall within the legal road transport width. It can easily be loaded with a tractor fore-end loader or telehandler. A heavy duty double pitch chain drives the Bale Chamber, which sits on and is guided by large diameter rollers and axles.

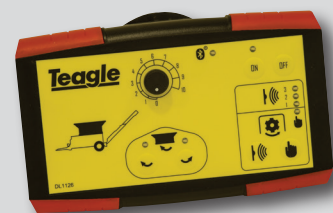


Operator benefits



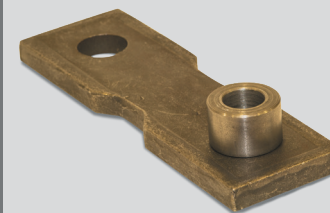
Calibrate Output

Quick change screens can be switched at ground level in minutes. The two-part screens are reversible and can be fitted in various combinations to control output of finished product.



Stay in Control

A robust Bluetooth® control desk provides remote control of power loading and bale chamber rotation from up to 50m away in the cab of the loading vehicle.



Long Service Intervals

Hammers have a high performance steel body with wear resistant Carbide edge facing. Each hammer has 4 wearing edges and runs on a hardened bush on a high grade steel rod.



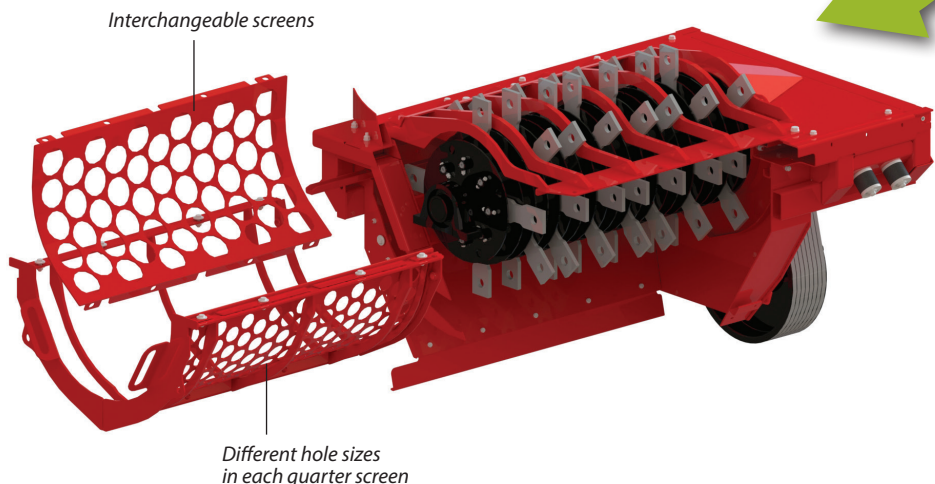
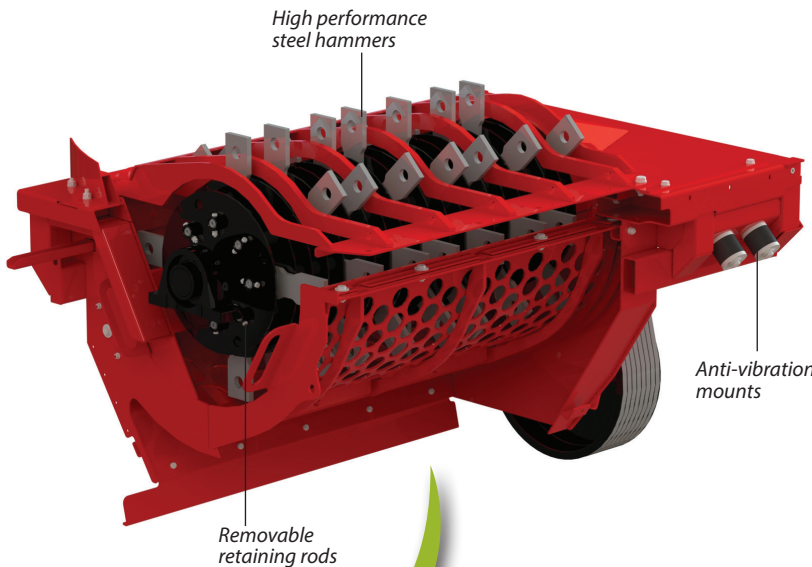
Safety on the Move

High specification running gear and chassis ensures compliance to European Homologation Standards up to 40km/hr.

The cutting edge

High Capacity Rotor

- ✓ Rotor speed is 2000rpm, generating a tip speed of 73m/s.
- ✓ Rotor is fitted with 56 high performance steel hammers with Carbide edge facing.
- ✓ Heavy duty 15mm hammers rotate on hardened bushes to ensure durability of the removable retaining rods.
- ✓ Anti-vibration mounts minimise wear and tear, and operating noise.

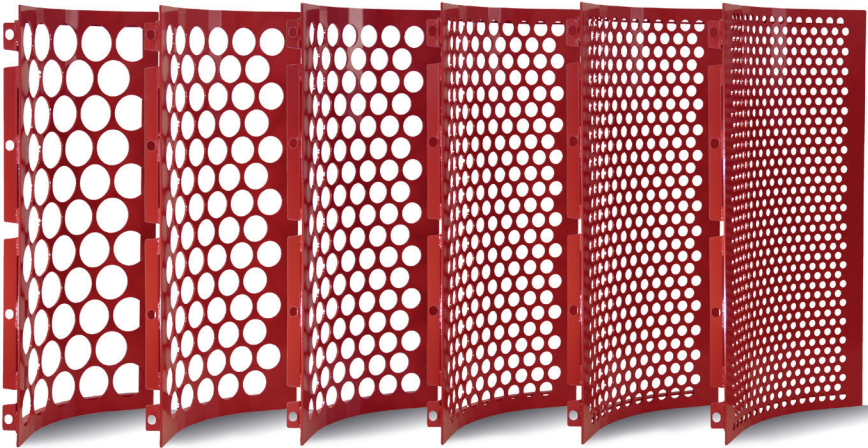


Quick change screens

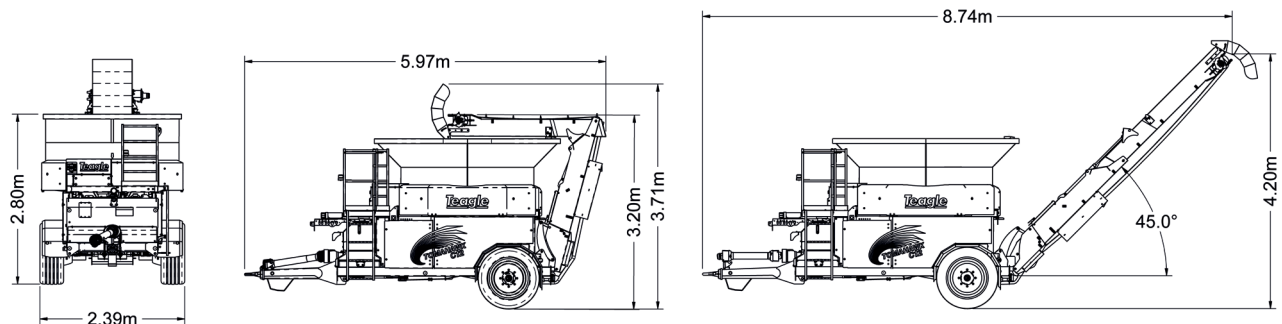
- ✓ Screen switch is achieved at ground level from the rear of the C12, with no need to climb into the bale chamber.
- ✓ Interchangeable screens comprise two quarter circle sections that are reversible when worn to maintain milling performance.
- ✓ For additional cut control, hole sizes in each quarter screen can be different.

Screen options

- The C12 is supplied with a set of two quarter circle screens as standard.
- Screens are available with 100mm, 75mm, 60mm, 40mm, 30mm and 20mm hole sizes.
- Up to 4 additional spare screens can be stowed in a rack located inside the C12.



Specifications



General

Bale chamber diameter at base	2.20m
Bale chamber loading diameter	2.20m/3.00m

Weight	4200kg
PTO speed	1000rpm

Transport

Transport width	2.39m
Transport length	5.97m
Transport height	3.20m

Working

Working length	8.74m
Conveyor discharge height (variable)	4.20m
Loading height	2.73m

The company's policy is one of continuous improvement and development, therefore specifications are subject to change without prior notice.

Options

Additional Screens

Quick Change Screens available with 100mm, 75mm, 60mm, 40mm, 30mm and 20mm sizes. (2 screens as standard with machine)

Drawbar Hitch and Jack

An optional 80mm ball hitch can be specified in lieu of the standard bolt-on ring hitch. A manual jack is available for either hitch type.

Conveyor Deflector

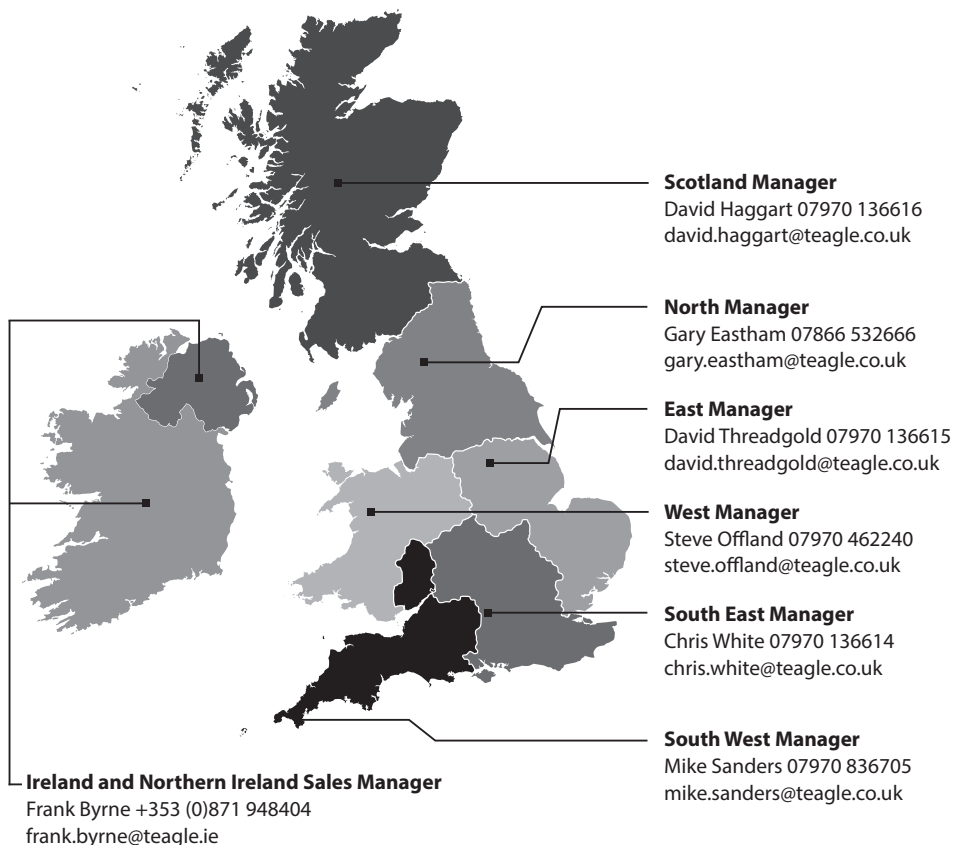
Control straw discharge when filling a trailer.



Teagle

With over 30 years experience designing, manufacturing and supporting The Tomahawk range of Bale Processors, Teagle has established a reputation for performance and reliability, offering feeding and bedding solutions for all applications.

Call our Sales Desk:
01872 560592



T400/T500



T7100



T8100/T8500



T9500/T1010



TELEHAWK



Teagle

Teagle Machinery Ltd

Blackwater, Truro, Cornwall TR4 8HQ
sales@teagle.co.uk www.teagle.co.uk
Tel: 01872 560592